

# UCSF Clinical Laboratories Organizational Chart

## CAP/CLIA Terminology Key:

1. Medical Directors = CC, TS/TC, GS
2. Section Directors = CC, TS/TC
3. Manager = TS/TC (excluding Tx Svc, Cyto, MDX)
4. Senior Supervisors = TS/TC (excluding Tx Svc, Cyto, MDX)
5. Supervisors = GS

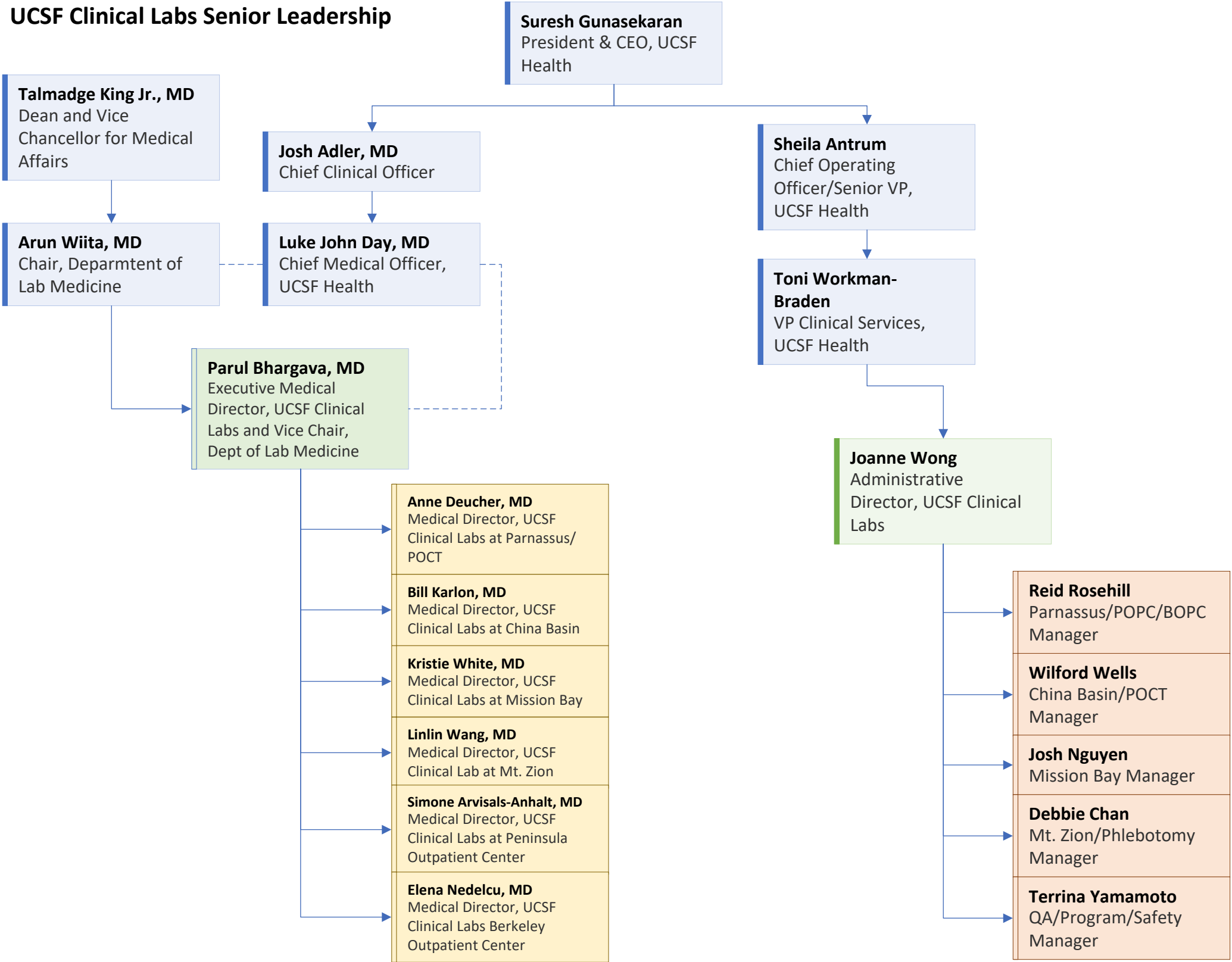
TS = Technical Supervisor

TC = Technical Consultant

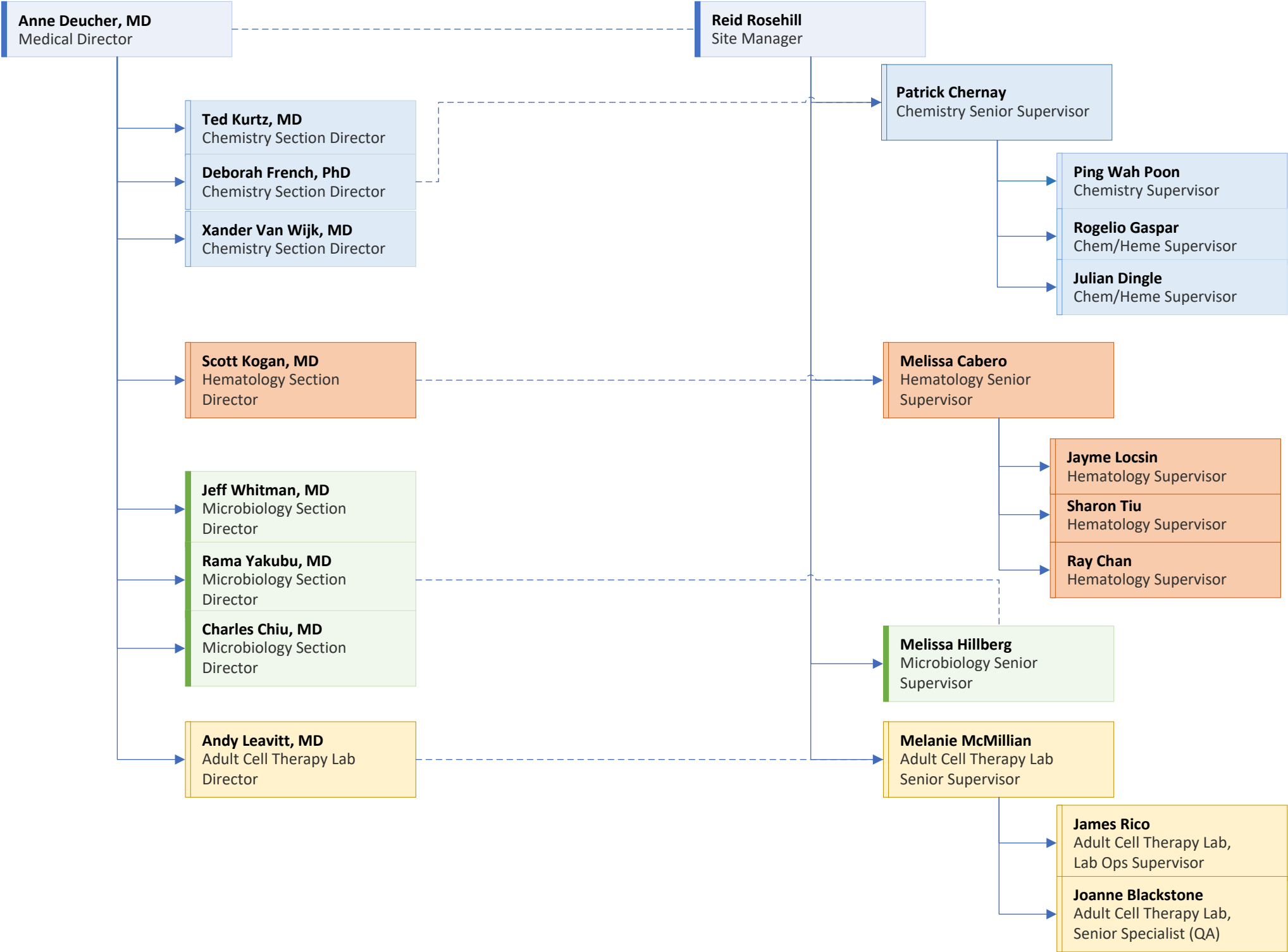
GS = General Supervisor

CC = Clinical Consultant

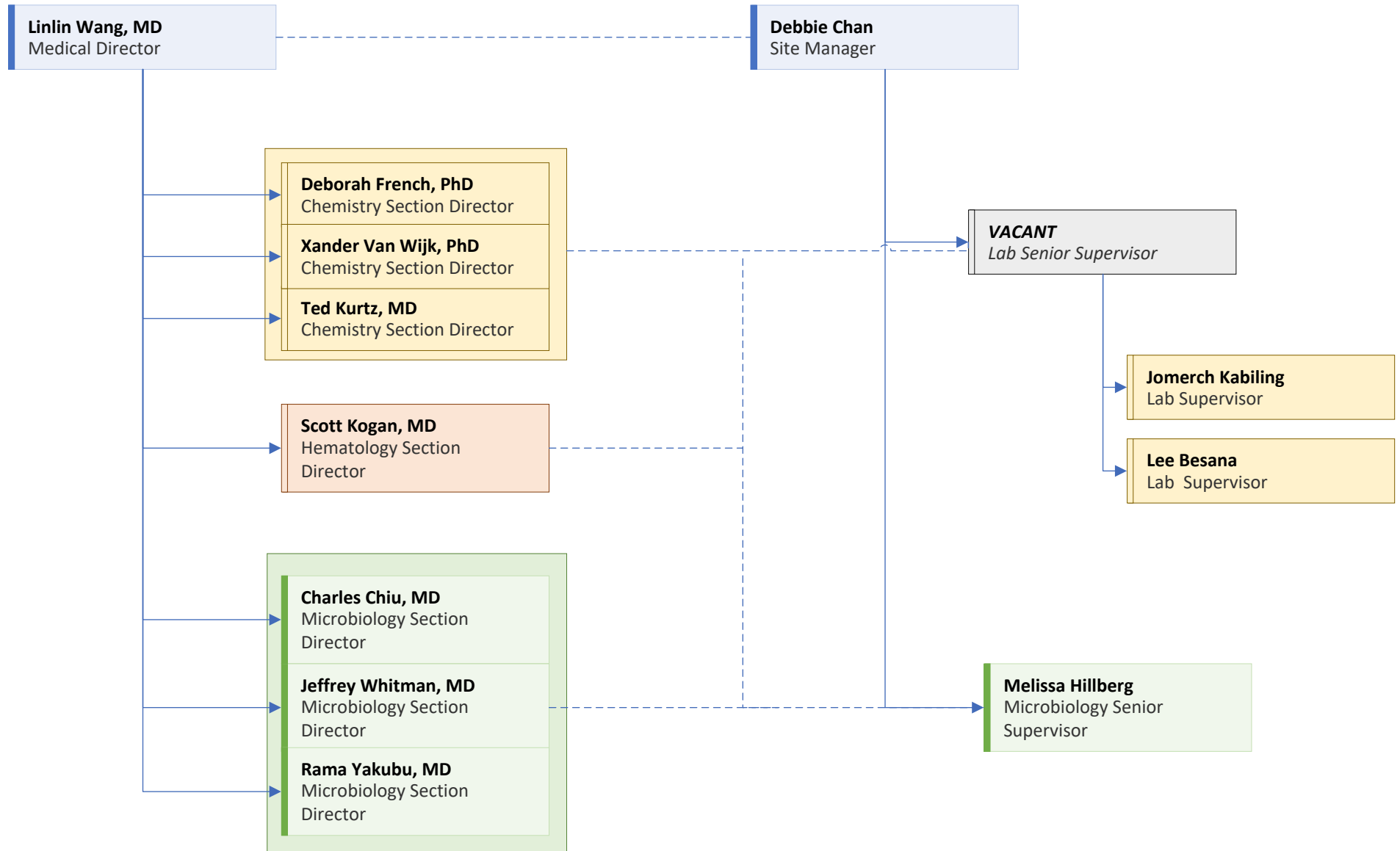
UCSF Clinical Labs Senior Leadership



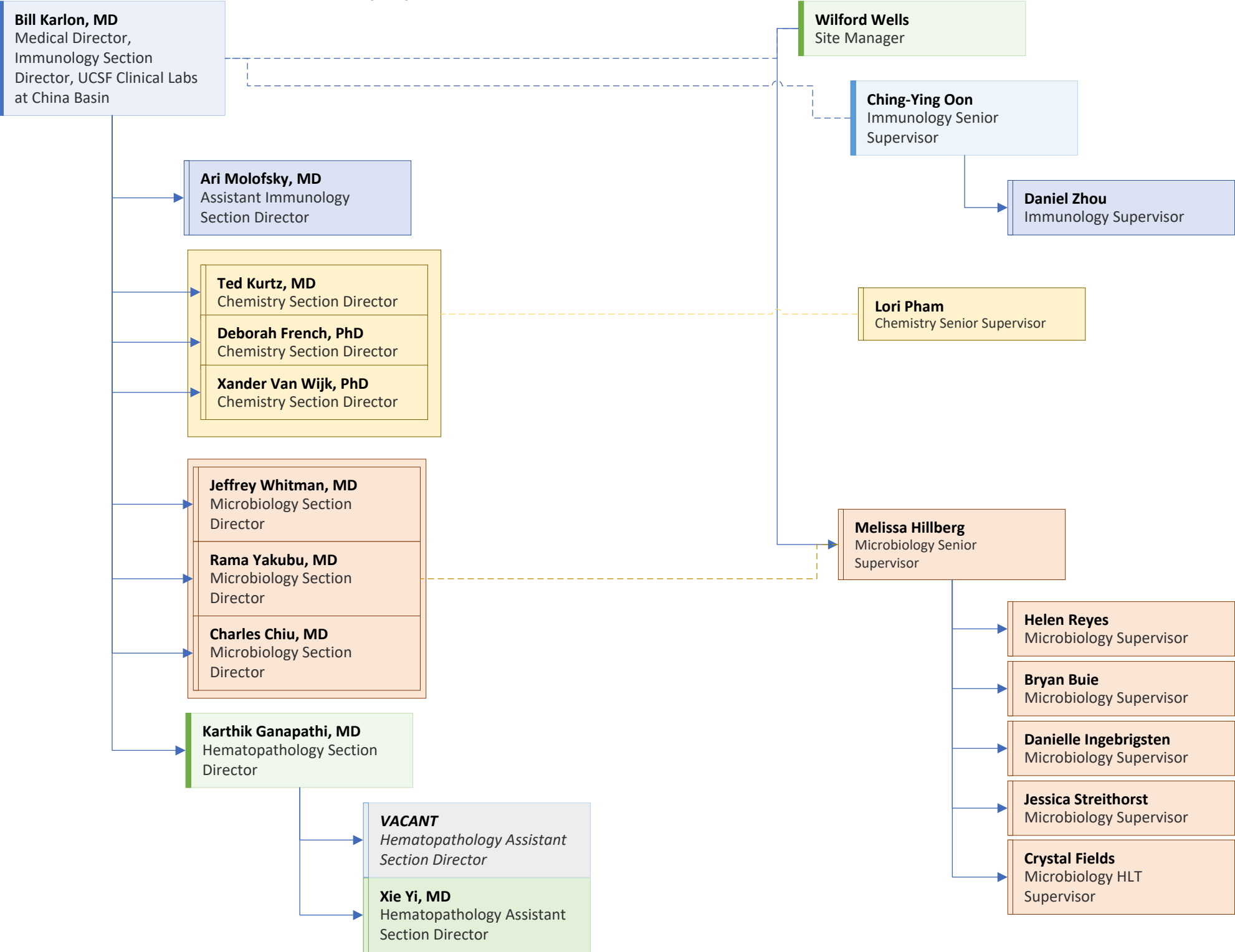
# UCSF Clinical Labs at Parnassus Heights (PH)



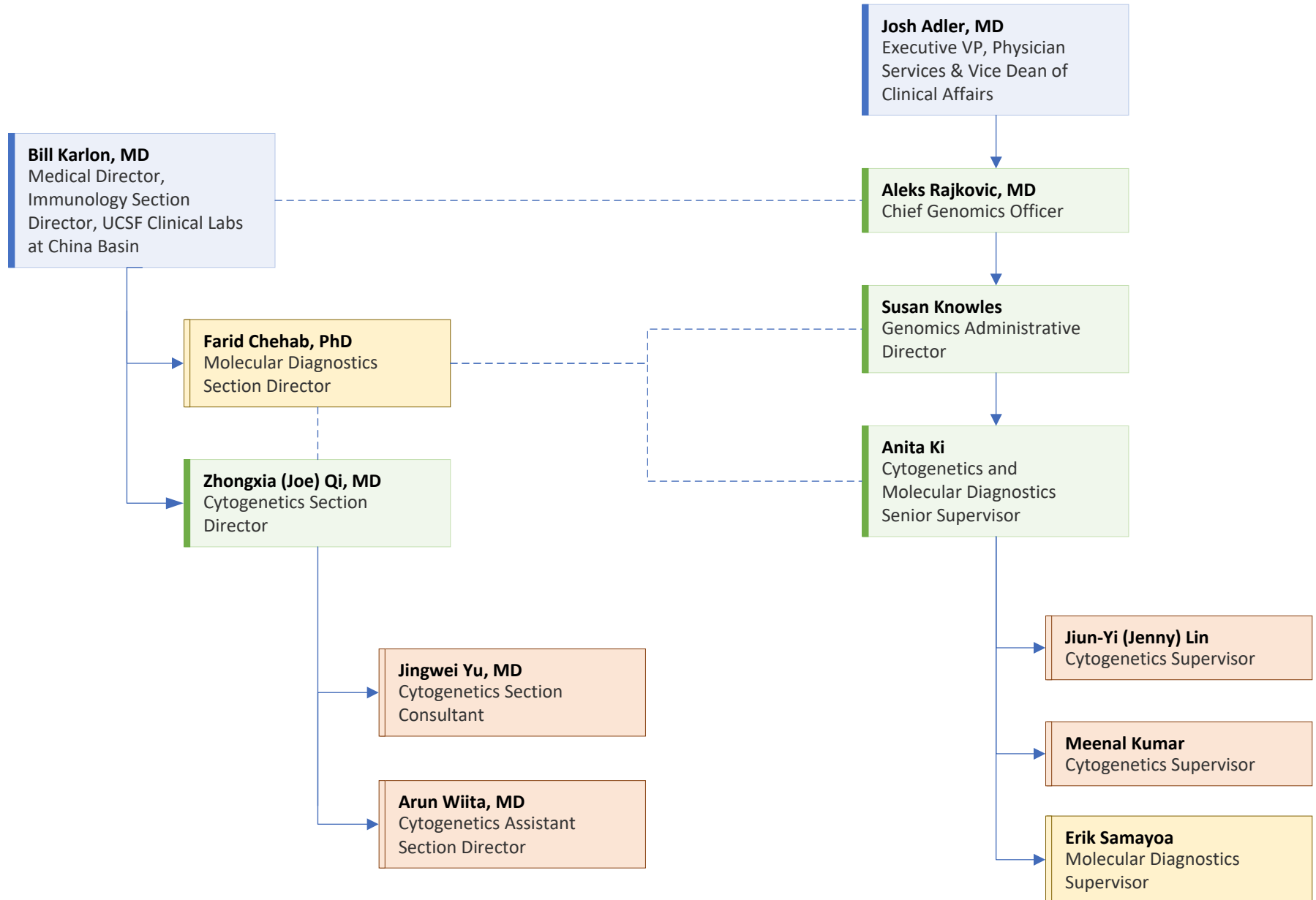
# UCSF Clinical Labs at Mount Zion (MZ)



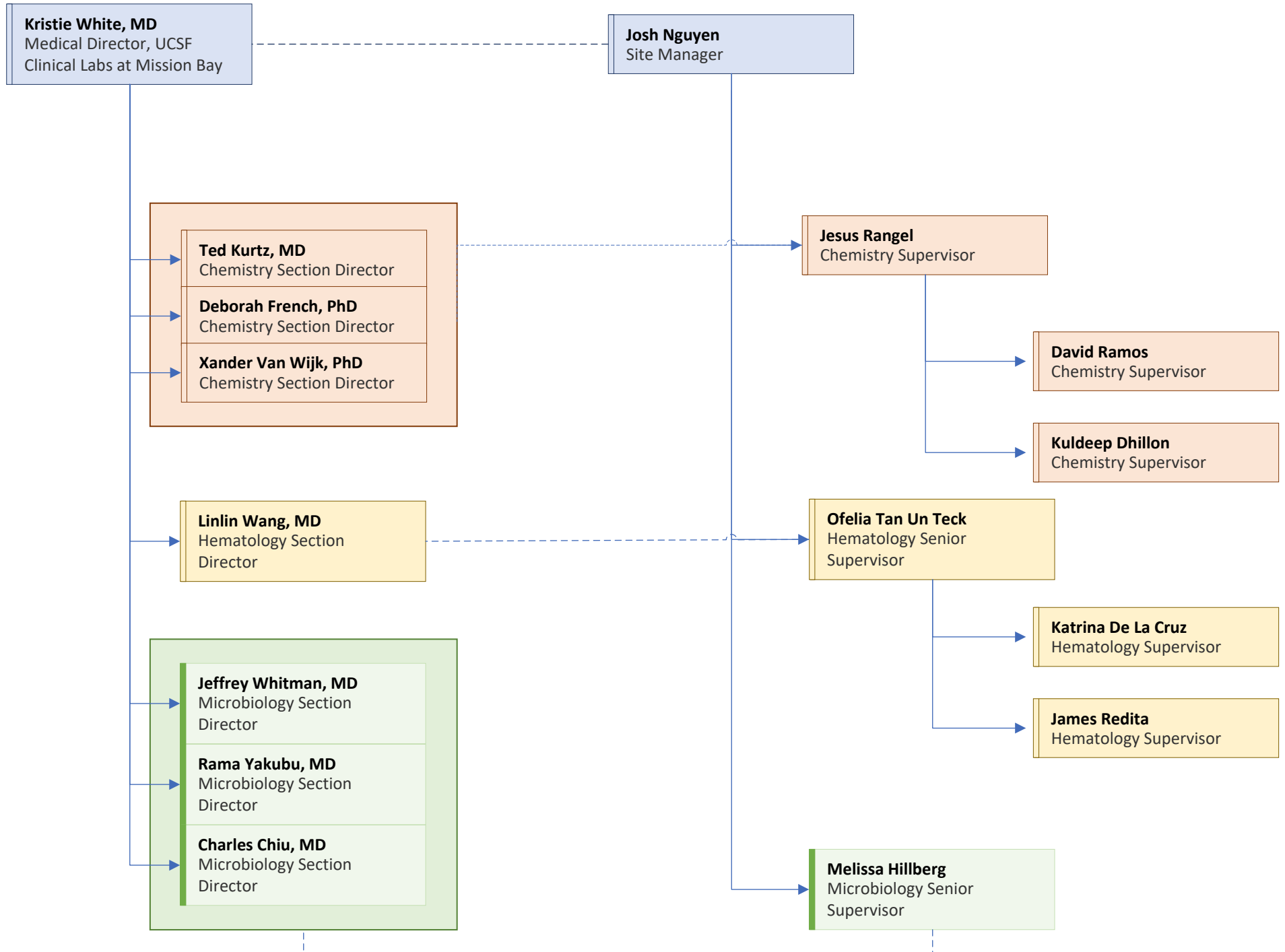
# UCSF Clinical Labs at China Basin (CB)



## Genomics - China Basin (CB)



# UCSF Clinical Labs at Mission Bay (MB)

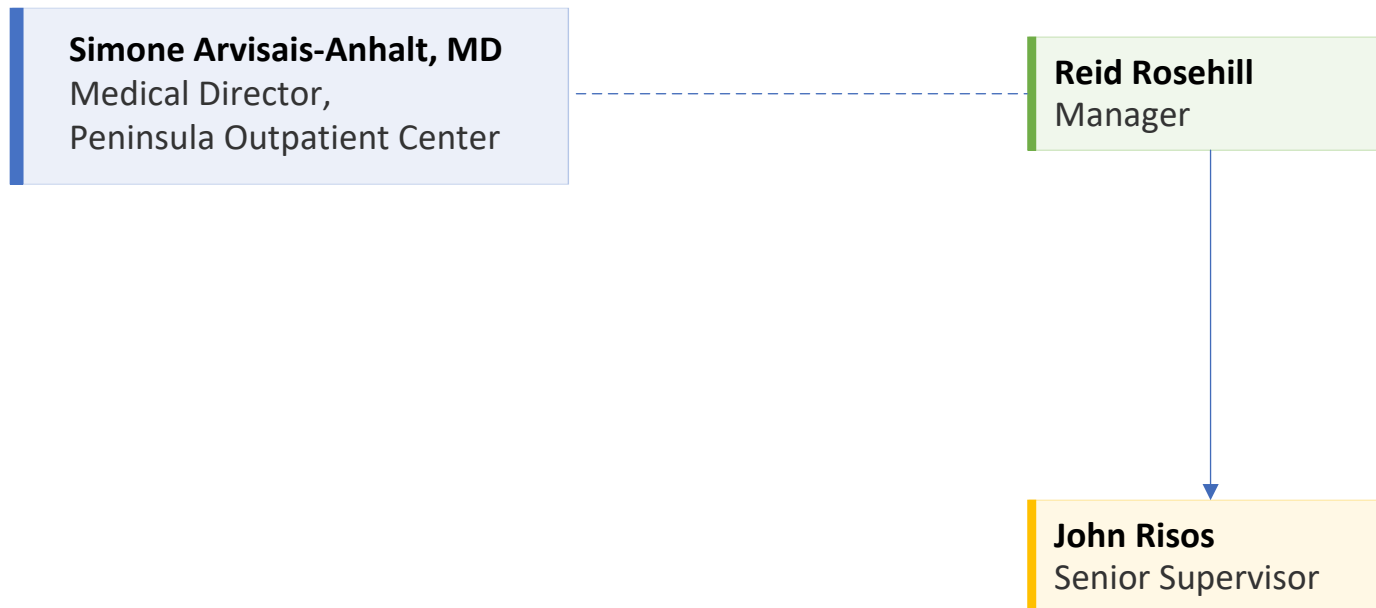


## UCSF Clinical Labs at Berkeley Outpatient Center (BOPC)

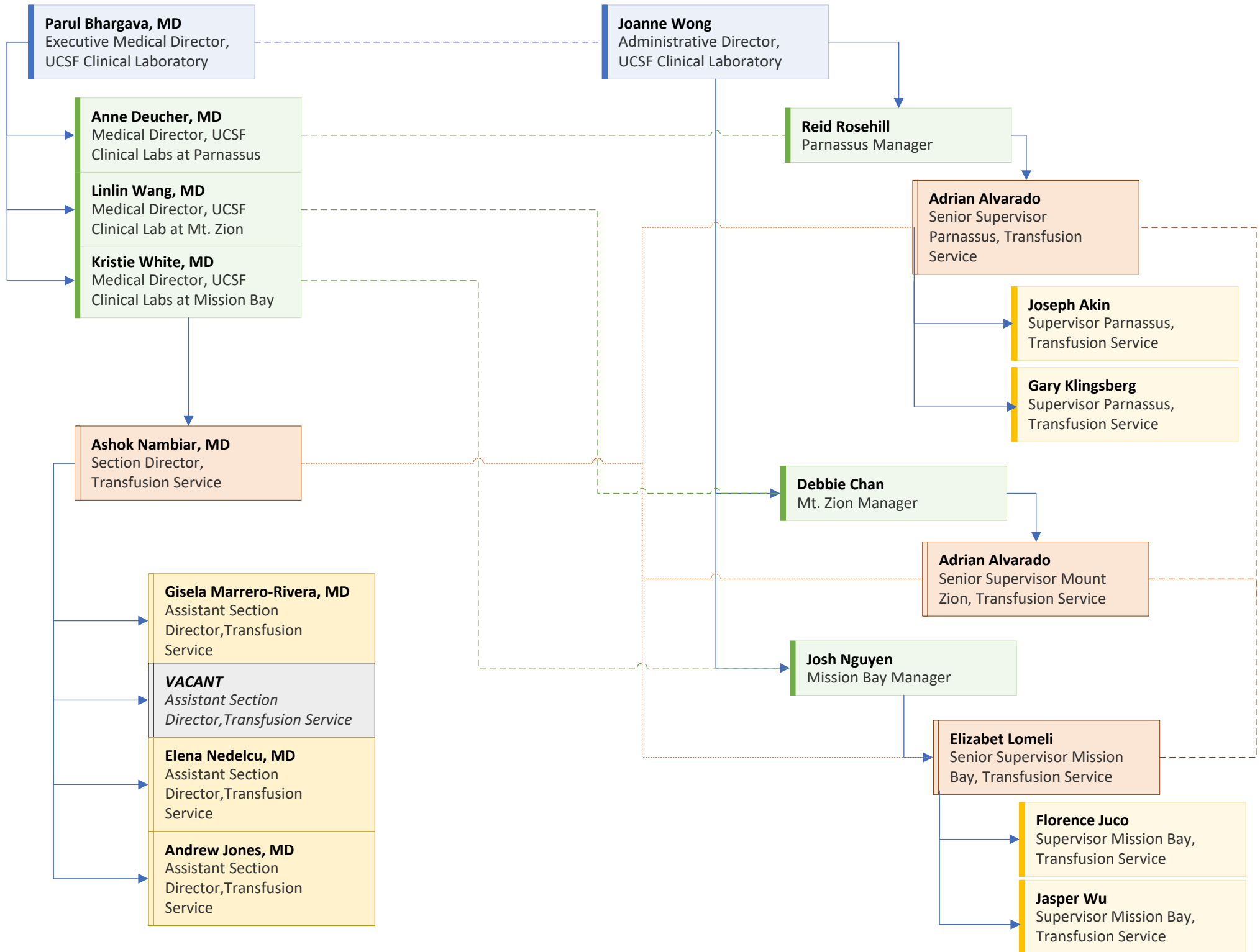




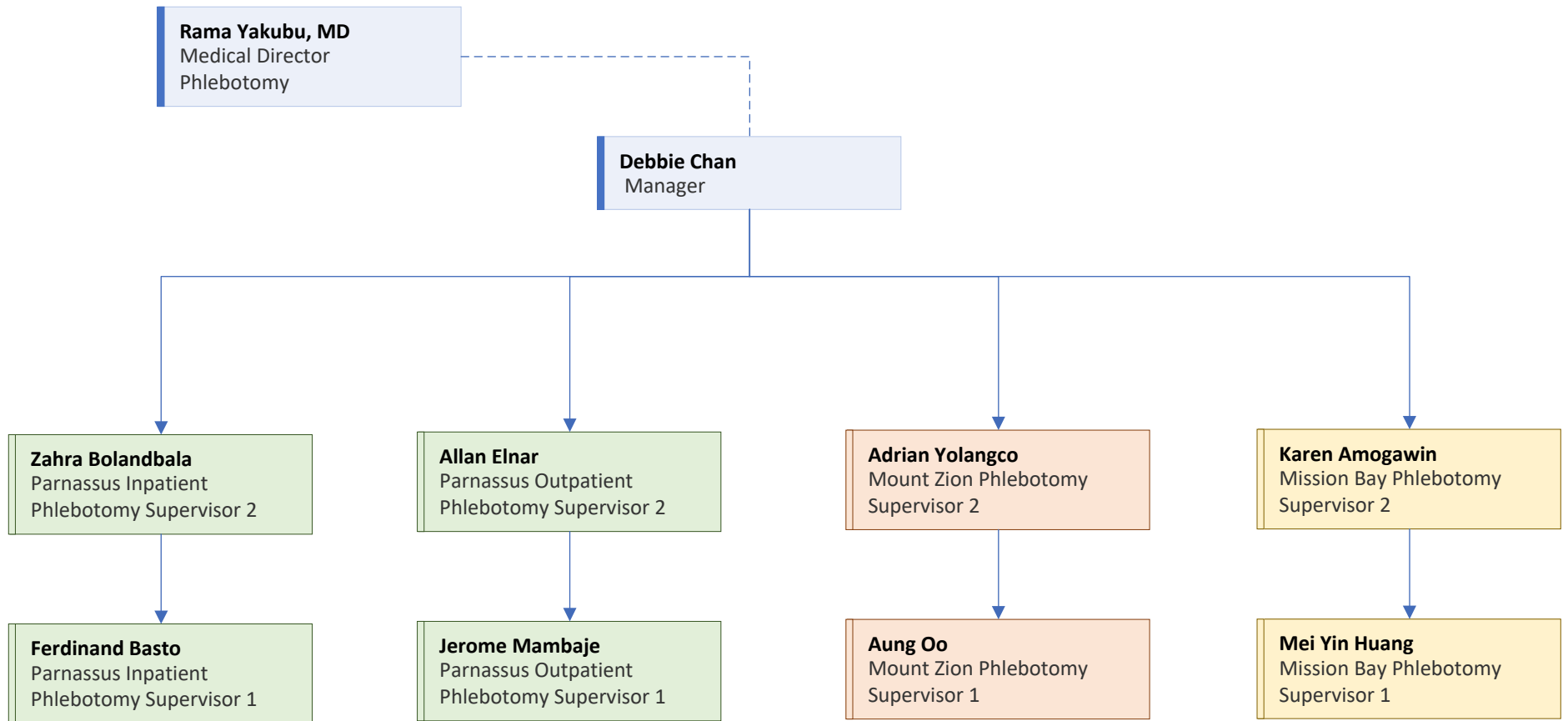
## UCSF Clinical Labs at Peninsula Outpatient Center (POPC)



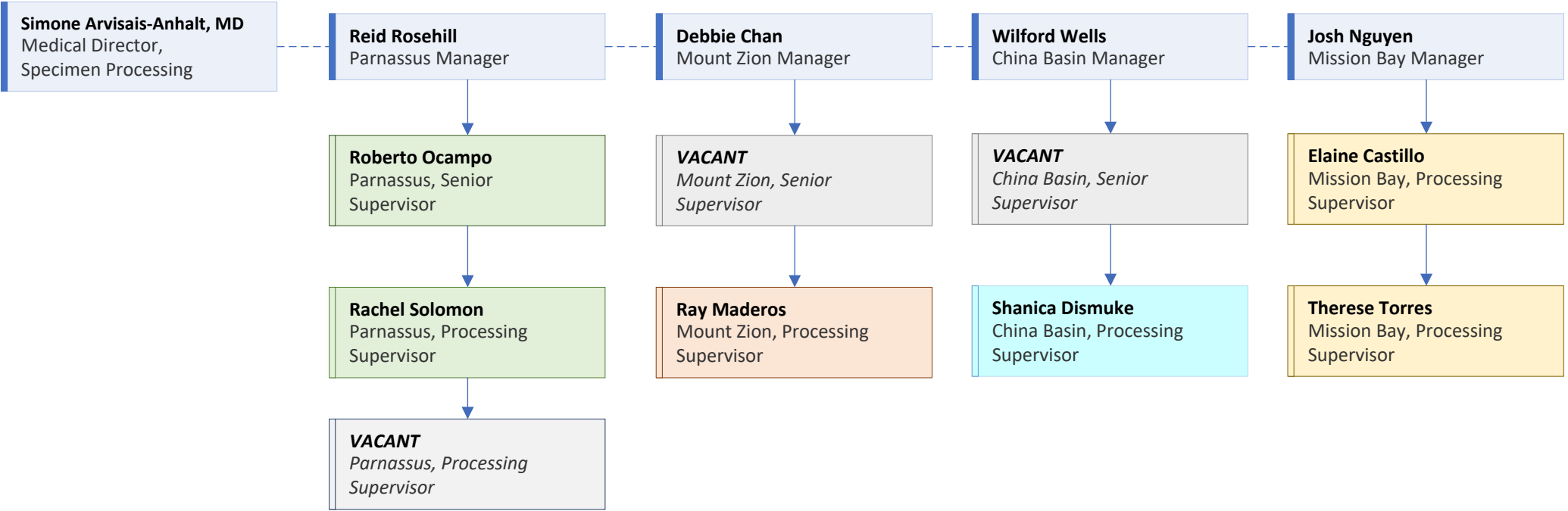
## UCSF Transfusion Medicine Services



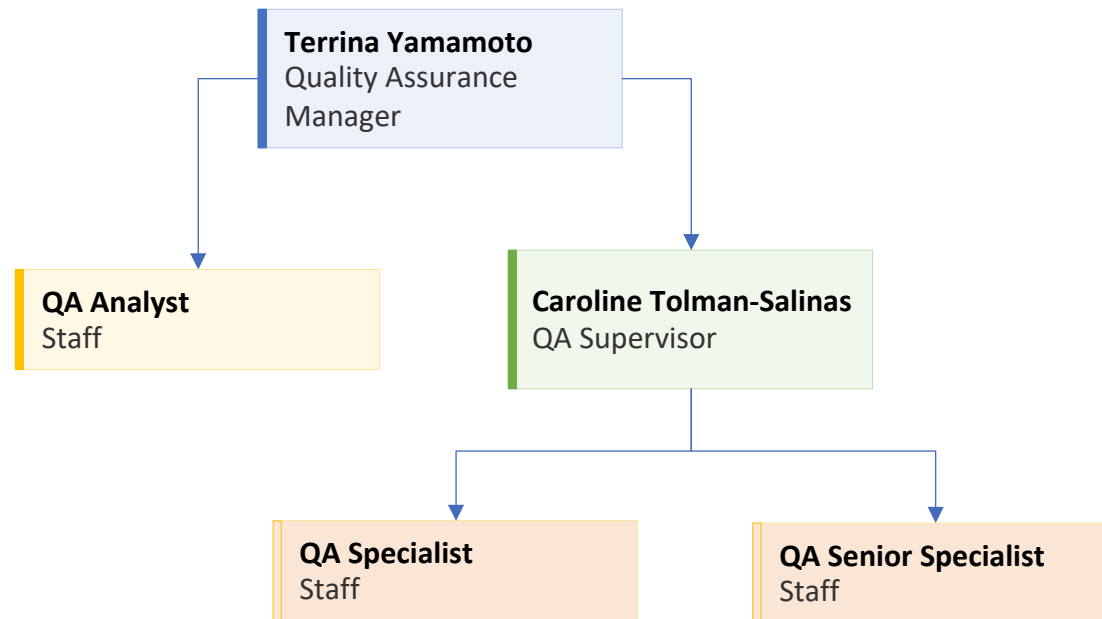
# UCSF Clinical Labs Phlebotomy



# UCSF Clinical Labs Central Processing



## UCSF Clinical Labs Quality Assurance/Regulatory Compliance/Safety



## UCSF Clinical Labs Programs

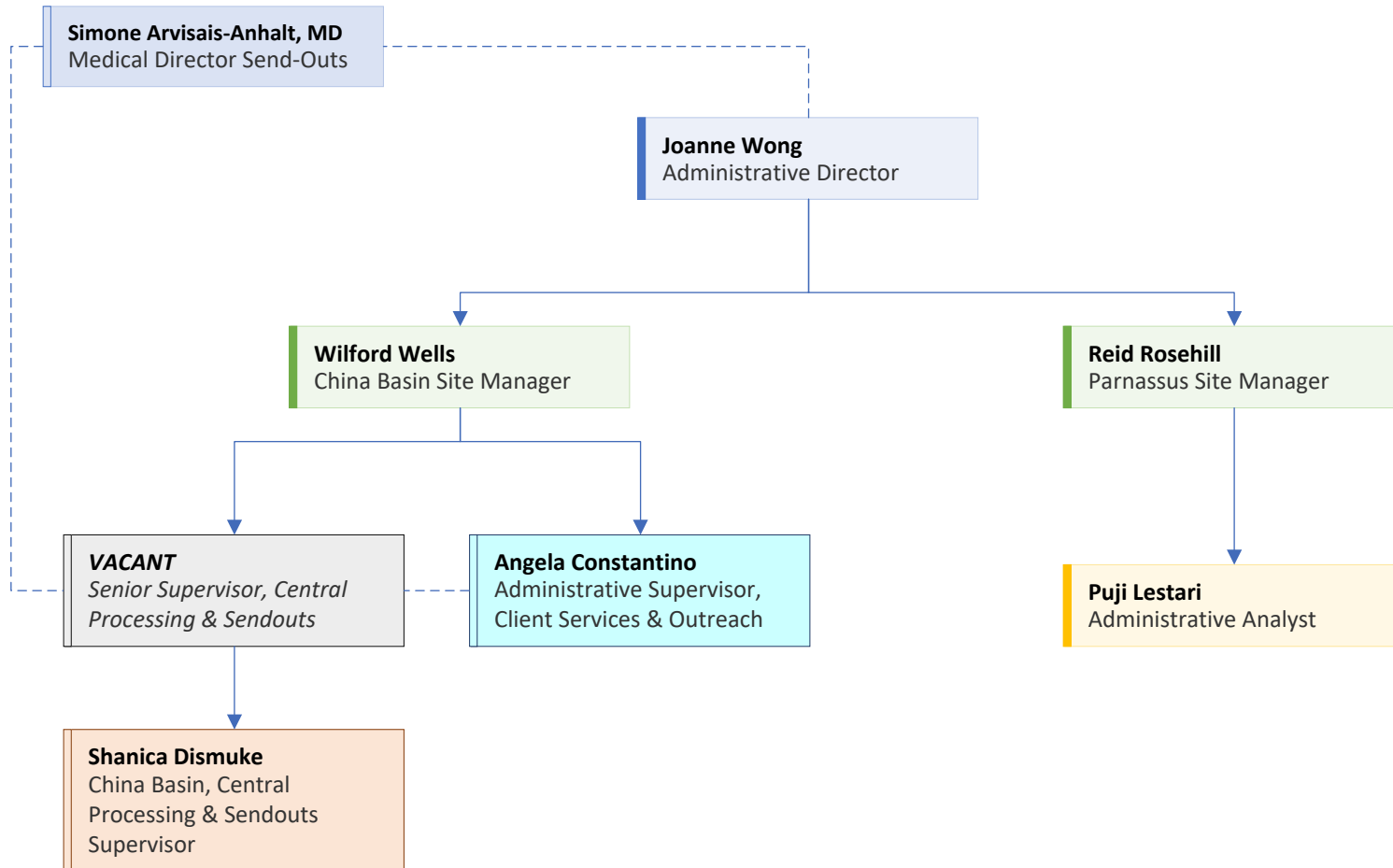
**Terrina Yamamoto**  
Manager

```
graph TD; TY[Terrina Yamamoto  
Manager] --> SA[Shaun Arevalo  
Supervisor]; SA --- CLTP[CLS Training Program]; SA --- CEP[Continuing Education Program]; SA --- DCP[Document Control Program]; SA --- SLP[Step Ladder Program];
```

**Shaun Arevalo**  
Supervisor

CLS Training Program  
Continuing Education Program  
Document Control Program  
Step Ladder Program

# UCSF Clinical Labs Administration & Ancillary Services



## UCSF Point of Care Testing (POCT)

